

4. Attachment

Home

Up

Step 4: Attaching the flexi!

Tools required:-

- Solder
- Temperature controlled soldering iron (NOT just a plug in type!)

I offer an [Installation Kit](#) of parts that most people will not have. Add this to your order if you do not have some of the items.

Home

1. Opening

2. Removing

3. Preparation

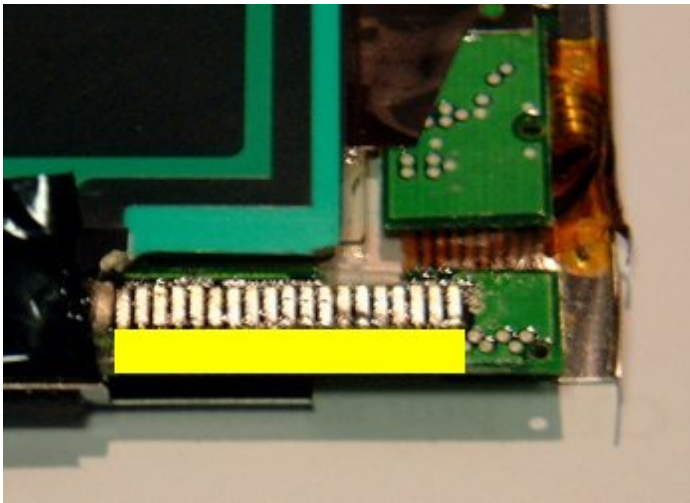
4. Attachment

5. Reassembly

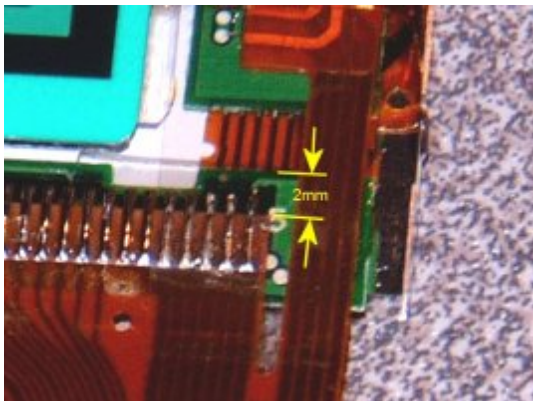
Soldering FAQ

Installation Kit

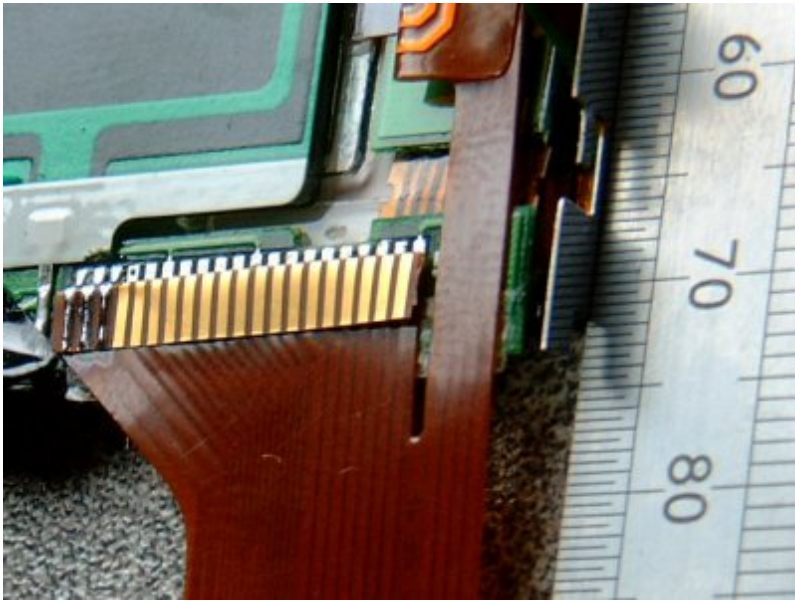
These instructions assume the use of the Psionflexi.co.uk [installation kit](#)



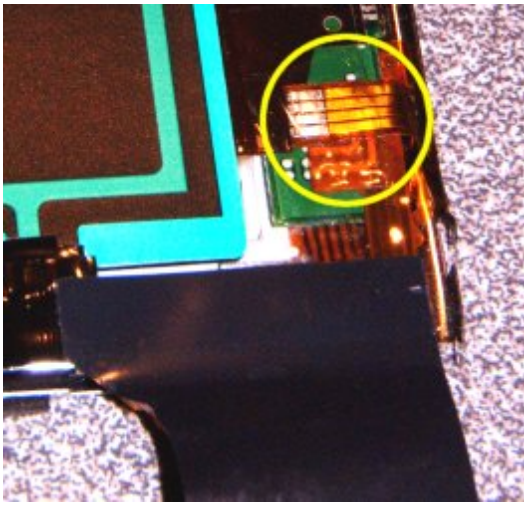
Cut a piece of double sided tape the same width as the contacts and 2mm deep. Stick this just below the contacts on the green PCB



Now carefully align the new flexi with the contacts and stick it down to the double sided tape. The flexi should be approx 2mm from the top of the green PCB. The dimension is not critical but the flexi must be parallel with the screen edge. You can check this by putting a ruler along the metal screen edge.



Once you are sure that the flexi is aligned correctly AND is parallel with the screen edge the connections can be soldered. It is important to make sure that the flexi is as close as possible to the green PCB so make sure the double sided tape is holding it down well. When soldering the connections use a VERY SMALL amount of SMALL solder and ensure that the solder 'wets' both the PCB and the flexi. The solder does not have to extend to the full length of the exposed gold contact. The electrical contact is made UNDER the flexi. Make sure nothing gets too hot else the tape will let go and the flexi will lift. You may find that the two parts of the flexi need holding together with some locking tweezers or similar to stop them springing apart. So long as it does not get misaligned this is not too much of a problem.

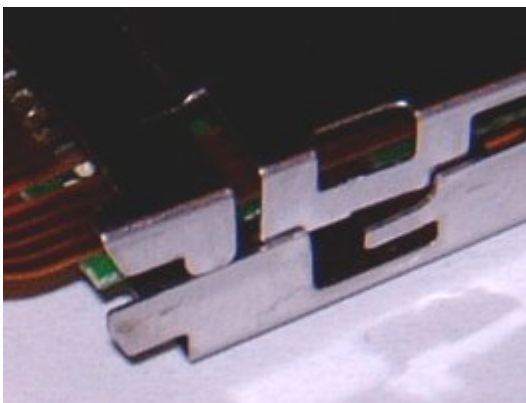


Now stick the remaining 'tail' part of the flexi to the touch screen connections using double sided tape ensuring that the solder connections are aligned. Solder the four touch screen connections to the other part of the flexi. You may find that the two flexi's need holding together with some locking tweezers or similar to stop them springing apart.

Now stick this to the screen with some double sided tape.



Tape down the touch screen flexi using pressure sensitive tape. Use some more double sided tape across all the exposed main flexi solder joints to stick the black or brown flexi protector back to the screen. Ensure that the protector is aligned with the flexi itself. Add some more pressure sensitive tape over the protector to hold this down.



Now attach the metal back of the screen assembly by clipping in the two lugs at the top and 'hinging' the back down. Ensure the sides of the back go INSIDE the front metal cover. Push the small prongs back into the holes ensuring that nothing is proud of the outer case or the screen assembly will not fit back into the casing.

[Home](#)

[1. Opening](#)

[2. Removing](#)

[3. Preparation](#)

[4. Attachment](#)

[5. Reassembly](#)

[Soldering FAQ](#)

[Installation Kit](#)

[Opening](#) - [Removing](#) - [Preparation](#) - [Attachment](#) - [Reassembly](#)