

2. Removing

Home

Up

Step 2: Removing the Flexi

Tools required:-

- Small pliers or screwdriver
- Temperature controlled soldering iron (NOT just a plug in type!)

Home

1. Opening

2. Removing

3. Preparation

4. Attachment

5. Reassembly

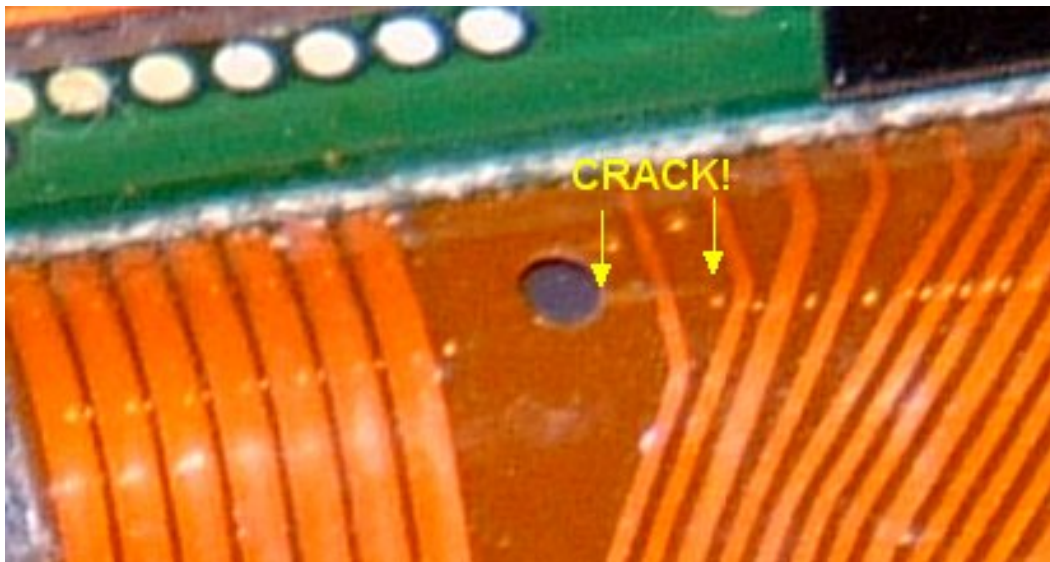
Soldering FAQ

Installation Kit

These instructions assume the use of the Psionflexi.co.uk [installation kit](#)



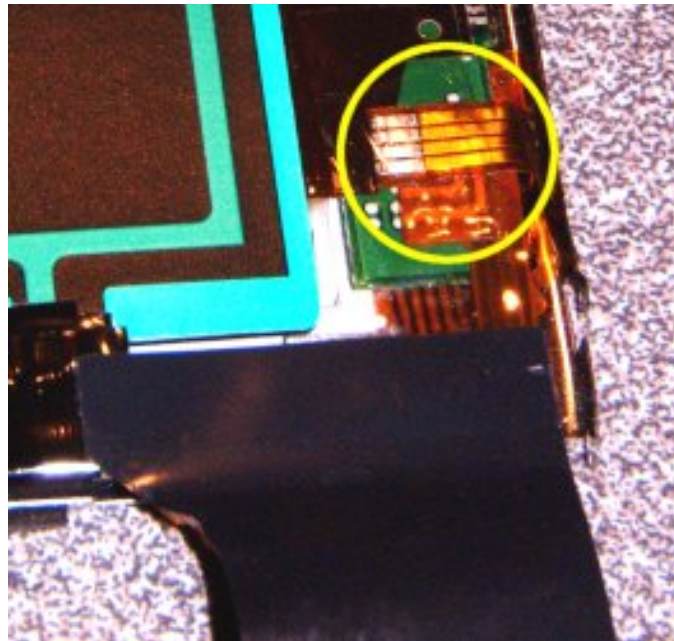
First we must remove the icon labels from the screen assembly. This simply unclips from the three lugs on the front of the screen (no lugs at the back). Use a thumb nail between it and the screen to remove.



It is now almost certain that you can see the usual fault on the flexi's!! (look carefully though!!)

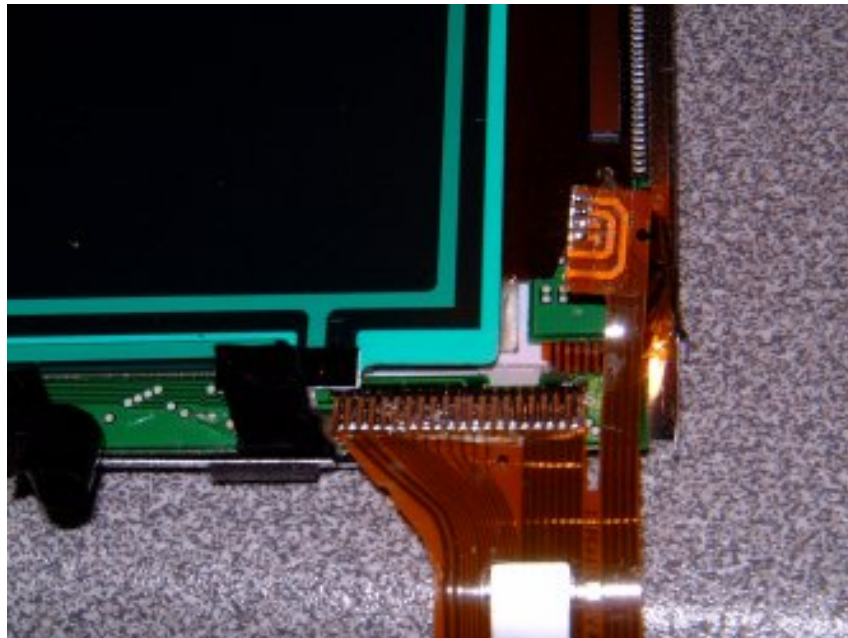
Now you need to remove the back case. Do this by gently bending the small tabs (three each side and four at the bottom) out and then lift the back cover off (bottom first). The picture shows what is underneath - the green rectangle is the EL backlight and the black/brown tape is the flexi protector. (The brown version looks just like another flexi, however it has no





electrical function)
Peel of the tape to reveal the 4 connections for the touch screen. The flexi from the touch screen is soldered directly to the screen flexi. Gently remove any sticky tape and then heat ALL FOUR connections with a soldering iron and gently pull apart.

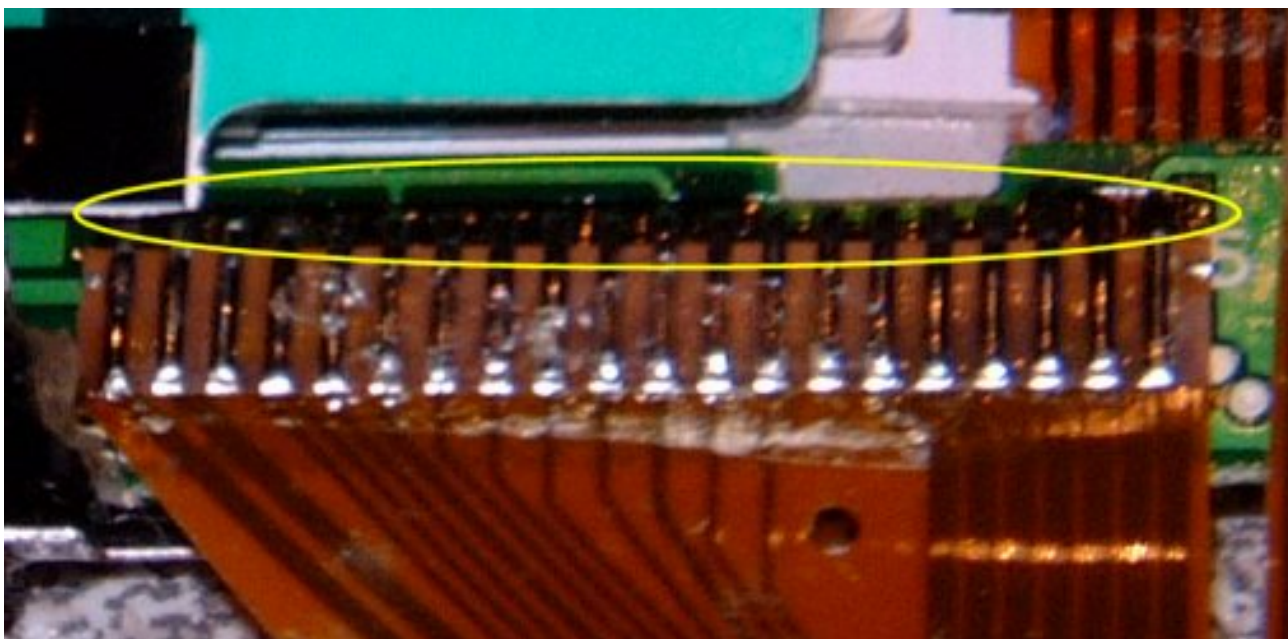
You can now remove the black or brown protector off the flexi. It is just stuck down but be careful to peel it off gently. Make note of its relative position to the screen and flexi for when it is refitted. You should now also be able



to lift the touch pad part of the main flexi clear of the screen. You will also need to peel back the black tape from the left hand side of the flexi

Now for the tricky part - Removing the main flexi! You will notice that just above the flexi is a row of shiny pads (circled) that are the connection between the flexi and lower circuit board. Apply the iron

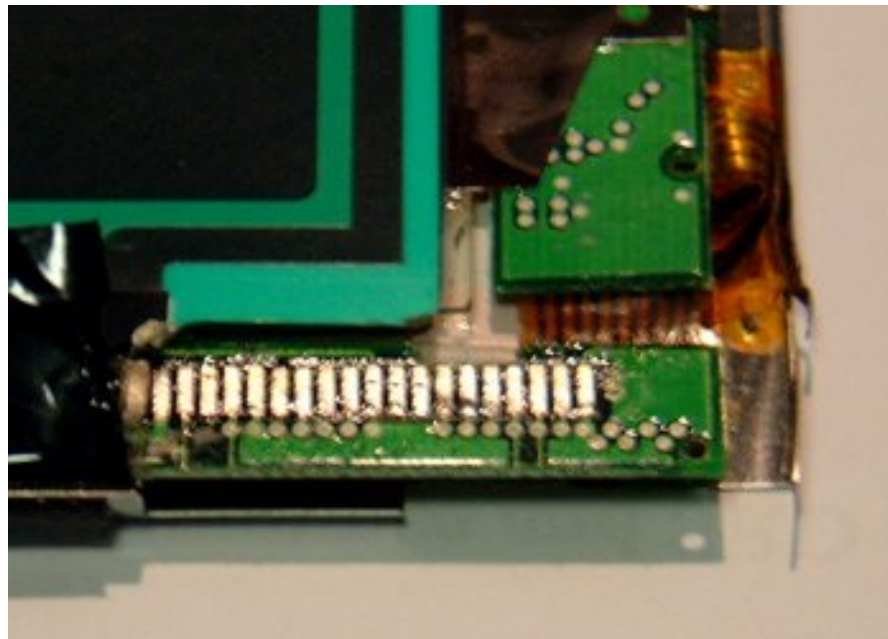
along this starting at one end and covering 2 or 3 of the connections. Now use a 'peeling' action on the flexi to GENTLY lift the molten connections. The flexi is stuck down



with tape so you may need to pull reasonably hard. However, if it is still stiff you are probably not heating the right place so move the iron. This is where the experience comes in!



You should now be left with a flexi....



....and some rough looking connections on the screen!

[Home](#)

[1. Opening](#)

[2. Removing](#)

[3. Preparation](#)

[4. Attachment](#)

[5. Reassembly](#)

[Soldering FAQ](#)

[Installation Kit](#)

[Opening](#) - [Removing](#) - [Preparation](#) - [Attachment](#) - [Reassembly](#)